

READ ONLINE AT [WWW.GREATBARRIER.CO.NZ/AOTEAADVOCATE](http://WWW.GREATBARRIER.CO.NZ/AOTEAADVOCATE)

## BARRIER BUSH PIGS TAKE ON KATIKATI STAGS

Due to our local Barrier lad Tyler Mitai Sykes being a regular resident player for the Katikati Stags rugby team, the call was put out to organise a game for the Stags against our very own Great Barrier Island Bush Pigs. The PIGS were called from the Bush after an awesome effort by the greater Sykes whānau, Ryan Daly and others, and the plan was hatched. Roaring Western BOP Katikati Stags were hearded onto a plane, some more came via boat from Coromandel, clashing their antlers and roaring loudly en route to the pristine lands of GBI. Of course Aotea has been deer free since the early nineties, so the Bush Pigs weren't very keen to share their fertile green pastures with these domesticated semi feral beasts.

The game started well, but unfortunately a huge roaring stag charged some of our vicious feral pigs. The large Stag named Reardon ran hard at our line of ravaged pigs and unfortunately for him, the domesticated stag crumpled.

However, as always our dedicated Island first responders were there to help the wounded stag. Joel Moses, Julianne Higham, Ella Moses were quick to respond. Then, local nurses Sharlamon Marx, Julia and others came to assist. Before long the injured stag was carefully and expertly stretchered off the field and into a waiting Ambulance.

The clash between the two teams was resumed, but now the Stags were out to avenge their own. They ran and stepped and shuffled their way around our brave boars and managed to pull out a 26 nil win.

The Stags roared all night, and then carried on again the next day at Aotea Brewing.

However, the PIGS gracious in their loss, still managed to stay and salute the Stags in their win. By mutual agreement between the two clashing teams of animals, it was agreed that these pristine lands remain the territory of our mighty Bush Pigs, and one day the roaring STAGS may return, but these lands will remain protected from these beasts, and the Bush Pigs will be our guardians.

Congratulations to everyone that participated, huge thanks to the Claris Club and the committee. Our major sponsors, Barrier Building, G.B. Transport, Barrier Air and Speedy Signs Manakau. Of course a big thanks to Katikati Stags for making the effort, the Sykes family and all the individuals involved to get it across the line. It was another great weekend. It was a shame that we needed the Westpac rescue helicopter, but it is again another reason why we should always support them. They even gave Reardon a circle of the grounds where both teams roared in the salute of our wounded hero.

Congratulations STAGS on your win. Congratulation Bush Pigs on another great game. Let's look forward to the next clash.

Thoughts and best wishes go out to Reardon for his recovery.

Words from Barry Illingworth. Photo credit: Blair Mason.

## AUTUMN PRINT SCHEDULE

Looking to make a submission or advertise? Email us on [AoteaAdvocate@gmail.com](mailto:AoteaAdvocate@gmail.com)

Next Submission Deadline: 14 April by 10am

Next Issue Available: 17 April





## COMMUNITY-LED DEVELOPMENT: A NEW OPPORTUNITY FOR THE NORTH OF AOTEA

**"Nāu te rourou, nāku te rourou, ka ora ai te iwi." With your food basket and my food basket, the people will thrive.**

This Whakataukī is the essence of Community-Led Development - coming together to share our selves, time and resources to bring about change to our community with the focus starting in the North of Aotea. It rings true that whilst we can see the challenges of living remotely, it also makes a strong community who have a can-do attitude, and what has become a catch phrase to describe us as "good at MacGyvering it up" by the Department of Internal Affairs (DIA)- our partner in this project. We originally came up with the term but the DIA just loved it and it stuck!

Ngāti Rehua Ngātiwai Ki Aotea Trust board were successful in 2023 in being selected to be one of the 20 communities around NZ that are currently in the DIA's Community-led Development program. Its initiated by the people, for the people. The community-led development approach focuses on communities as a whole, rather than on specific programmes or activities. It invites us to bring our strengths to the mahi that we do and see where we can bring challenges to the table and turn them into opportunities.

This programme for Aotea is just at the beginning - it continues for five years but from what we have learnt and seen around Aotearoa, this can go for much longer and I am sure the lessons that we learn in the process will far outlast the five years.

Our community-led development initiative is called Toitū Aotea - to be sustainable and have longevity. To look after the whenua and the whanau who live here now and for generations to come. We have an exciting opportunity to create lasting change for the North of Aotea—and in turn, the whole motu (island).

Some of the challenges on the island are easy to identify; power, water, kai, health and connection.. Those are all big and worthy of our mahi and focus. Its the ones that sit behind we are curious about, both big and small what achievements will arise out of our community coming together? Working together, connecting, being reminded sometimes of how things used to be and



what could our future look like if we have the tools to help us.

### What is Community-Led Development?

Community-led development is about empowering people to shape their own future. Instead of waiting for change to come from the outside, we take the lead in identifying what's important, what needs to happen, and how we can make it work—together. The Government is supporting community-led development, through the Department of Internal Affairs, by providing support, advice and funding, but the work is led by the community.

### This approach is guided by key values:

- › Kotahitanga - Working together as one community
- › Manaakitanga - Caring for each other and our environment
- › Whanaungatanga - Strengthening connections between people
- › Kaitiakitanga - Protecting and sustaining our whenua and moana

Through Toitū Aotea, our community has the chance to develop projects that will enhance daily life, support whānau, and build a strong future for the next generation. Some of the ideas that have been suggested so far include:

- › Activities for Tamariki, Rangatahi &

- › Sustainable Power & Water Solutions
- › Sharing Kai
- › Cultural Development & Community Spaces
- › Business Growth with solid fill Community enterprise to boost a localised economy

These are just a few of the ideas that have been put forward. What do you think? What would make life better for our community? We want to hear from you! Toitū Aotea - **Community-Led Development Hui is happening on March 22nd at the Port Fitzroy Boat Club, 2-5pm.** This is a chance for everyone to share ideas, support projects, and help shape the future.

After the hui, Orama will provide kai, and we'll enjoy some amazing local musicians sharing their mahi (work). It's a time to kōrero (talk), hono (connect), and whakanui (celebrate what's possible when we come together).

If you want to tautoko /support a project—or even better, be part of making it happen—let us know. You can email us at AoteaCLD@ngatirehua.iwi.nz or come along to the hui.

Kia ora ai koe i tō haerenga, nau mai, haere mai ki te mahi tahi, kia tipu, kia rea tātou katoa. - Sacha Eddington (Community engagement officer) On behalf of the Toitū Aotea steering group

## ABOVE BOARD FEBRUARY 2025

A sombre start to the February business meeting, with a minute's silence to acknowledge the passing of Monique van Ditzhuyzen and Buster and Rebecca Park. As board chair Izzy Fordham said, it was a moment to "reflect on friendships".

Later in the meeting, Deborah Kilgallon (coordinator of the island's Dark Sky Enthusiasts' Group) presented Aotea's 2024 report to the International Dark Sky Association. This report is an annual requirement of our dark sky sanctuary status.

According to Deb, it'd been a great year in the realm of the night sky. "I feel like everything that's gone into the report this year has been really positive. The key thing is our night sky remains exceptional; just as exceptional as when we got our dark sky status. And we want to keep it that way. I'm working hard to keep it that way."

To complete the report, Deb had to drive around the island in the dead of the night, taking measurements from 27 different locations. She told the board she'd found a

few private properties with outdoor lights that didn't meet the IDA's standards for a dark sky place.

"In what is probably my least favourite part of the job, I've knocked on the door and talked to those people, and to my relief found that they have been fine to switch the light off, disconnect it or replace it."

But turns out Deb saved the best for last - the meteor watch station which (thanks to local board funding) is now set up in Medlands. It tracks meteors in the night sky over Aotea. It's well worth checking out the timelapse video; I guarantee you'll be spellbound and surprised



by the sheer numbers popping off while we sleep. Go to: [fireballs.nz/station-map/](https://fireballs.nz/station-map/) (and click on the icon that sits on Aotea). Yes, fireballs.

Judy Gilbert made a brief cameo to speak to a \$5,000 funding application for a "local for local" fish project business plan. The project would see the community buy quota, allowing local fishermen to catch fish then sell it locally. Which in turn would mean locally caught fish on the menus at our clubs and pub etc. A long held and laudable goal. Judy and her team will now go away, crunch the numbers, create the spreadsheets, and see if it's possible to make it work.

Now, before I go, it's election year! Your one-in-three-year chance to stand for the local board. Already we are seeing interested people attending the business meetings to get a feel for this part of the job. The next business meeting is at 1pm on Tuesday 25 March if you're keen to come along and check it out. Candidacy opens in July.

Words by Kathy Cumming, Strategic Broker, Auckland Council

# MARCH/APRIL EVENT CALENDAR



SUNDAY	MONDAY	TUESDAY	WEDNESDAY	THURSDAY	FRIDAY	SATURDAY
16	17	18	19	20 Somatic Movement Jam Night at The Currach	21 'Dancing Around the Barrier' Art Exhibit by Monique Endt   on till 28 March	22 <b>Toitū Aotea</b> Community-Led Development Project Hui at Port Fitzroy Boat Club   2-5pm
23	24 Gentle Yoga 10am   Tryphena Hall <b>Island Screens</b> 'La Chimera' 7:15pm   BSC	25 <b>Local Board Ordinary Business Meeting</b> 1pm   CCC <b>Tāima Kōrero/Time to Talk:</b> Keeping our young people safe online with Brett Harvey CCC   5:30pm	26 <b>Tāima Kōrero/Time to Talk:</b> Keeping our young people safe online with Brett Harvey   Okiwi kura at 5:30pm	27 <b>Aotea Conservation Park</b>   Public Meeting 2pm   Details Below <b>Master the Art of Surveying for Pua o te Reinga / Woodrose</b> Glenfern   6:30pm Contact ecologyvisiongbi@gmail.com   Part of Eco Fest	28 Hatha Yoga   10am Glenfern Volunteer Morning 10am   Community Garden Medlands	29 <b>Onion Workshop with Caity Endt</b> 9:30am - 2:30pm at Okiwi Passion \$20   Spaces Limited, Book at foodres@anamata.nz <b>Aotea Ecology Festival Te Talao Connect: Caring for our Natural World</b> 9am - 2pm   CCC   Full Details below & within
30 <b>Raupō Taranga</b> with Rodney Ngawaka Glenfern   10-3pm Full Details Inside <b>Walk and talk with Graeme Atkins   10am</b> Contact Jo 022 314 9346 or ecologyvisiongbi@gmail.com Part of Eco Fest Weekend	31 Gentle Yoga 10am   Tryphena Hall <b>Island Screens</b> 'Two tickets to Greece' 7:15pm   BSC	01 <b>APRIL</b> Yoga 5:30pm at Okiwi kura	02 <b>Lego Club</b> Kaitoke School 3-4pm Full details inside	03 Somatic Movement Jam Night at The Currach	04 Hatha Yoga   10am Glenfern Volunteer Morning 10am   Community Garden Medlands	05 <b>Growers and Makers Market</b> 9:30am CCC
06	07 Gentle Yoga 10am   Tryphena Hall Iyengar Yoga 5:30pm   CCC with Linda Powers <b>Island Screens</b> 'EO' 7:15pm   BSC	08 Yoga 5:30pm at Okiwi kura	09 Yoga with Linda Powers   9am Tryphena Hall or 1pm CCC <b>Lego Club</b> Mulberry Grove School   3-4pm Full details inside	10 Somatic Movement & Mantra Meditation with Eunite   1.30-2.30   Tryphena Hall Jam Night at The Currach	11 Hatha Yoga   10am Glenfern Volunteer Morning 10am   Community Garden Medlands	12 Yoga   9am Try Hall <b>Celebration of Adele &amp; Leonie</b> & Health Trust Opening New Wing 1PM   Health Centre 2:30 PM   Claris Club
13	14 Deadline for submissions for next issue of Advocate 10am <b>Island Screens</b> 'Evil Does Not Exist' 7:15pm   BSC	15 Yoga 5:30pm at Okiwi kura	16 Yoga with Linda Powers   9am Tryphena Hall or 1pm CCC	17 <b>Issue 19 Available</b> Jam Night at The Currach	18 <b>Public Holiday: Good Friday</b> Volunteer Morning 10am   Community Garden Medlands	19 <b>Easter Market</b> 10am-2pm   Claris Club Email clarisclub@xtra.co.nz for stall bookings <b>Harvest Festival</b> at Aotea Brewing Details to follow
20 <b>Public Holiday: Easter Sunday</b>	21 <b>Public Holiday: Easter Monday</b>	22 <b>Local Board Ordinary Business Meeting</b> 1pm   CCC Any enquiries to: AoteaGreatBarrierLocalBoard@aucklandcouncil.govt.nz	23 Yoga with Linda Powers   9am Tryphena Hall or 1pm CCC	24 Jam Night at The Currach	25 <b>Public Holiday: ANZAC Day</b> Volunteer Morning 10am   Community Garden Medlands	26 Yoga   9am Try Hall <b>Everybody's Market</b> 10am-1pm   Arts & History Village   Claris

Yoga Class - details same as above or below

**WANT TO SUBMIT AN EVENT? EMAIL US AT AOTEAADVOCATE@GMAIL.COM**

**FIND THE FULL EVENTS CALENDAR ONLINE AT WWW.GREATBARRIER.CO.NZ/EVENTS**

## AUCKLAND CONSERVATION BOARD

*Te Rūnanga Papa Atawhai o Tāmaki Makaurau*

### Notice of Public Meeting

**Date:** Thursday 27 March 2025

**Time:** 2.00pm

(including public forum approx. 2.30pm)

**Location:** Okiwi DOC Office Meeting Room  
1501 Aotea Road  
Great Barrier Island

To speak at the public forum, please ensure to register with the Board Support Officer prior to the meeting:

**Email:**

aucklandconservationboard@doc.govt.nz

**Phone:** 027 220 9334

From 20 March 2025, the agenda can be viewed online at

<http://www.doc.govt.nz/about-us/statutory-and-advisory-bodies/conservation-boards/auckland/>



Te Talao Connect: Caring for our Natural World

## AOTEA ECOLOGY FESTIVAL 2025

SATURDAY, 29 MARCH 2025  
CLARIS CONFERENCE CENTRE, AOTEA, GBI

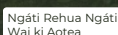
Join us for a day with Aotea community groups and inspiring speakers from here and around Aotearoa as we learn about te talao, conservation and our connection to the land, sea, and sky.

Funded by Auckland Council and the Aotea / Great Barrier Island Local Board. With significant contribution from Ngāti Rehua Ngāi Wai ki Aotea representatives.

### FESTIVAL PROGRAMME

- 9:00-10:00 AM - Conservation stalls
- 10:00 AM - Welcome to the festival & first speakers
- 11:00 AM-12:00 PM - Lunch break & stalls
- 12:00 PM - Presentations & speakers
- 2:00 PM - Closing

For more information, contact ecologyvisiongbi@gmail.com | 022 314 9346



[ecologyvisiongbi.com](http://ecologyvisiongbi.com)

## Celebration of Leonie and Adele

12 April 2025



Join the health trust at the opening of the health centre's new wing (1pm), then head to the Claris Club to celebrate Leonie and Adele as they retire. Please bring a plate of finger food to the club.

**SAT 12 APRIL**  
**1:00pm - HEALTH CENTRE**  
**2:30pm - CLARIS CLUB**





## A MESSAGE FROM AOTEA ARTS & HISTORY VILLAGE

Hi from Aotea Arts & History Village, we are full swing into 2025 with a buzz of workshop planning for mid-winter, Exhibition themes and solo shows. We are doing our best to cater for all the positive ideas that come our way.

The coordinator has been heading out to the schools to share creativity. It's been a humbling experience to see what Aotea Tamariki have to offer.

Thanks to all that could come and support the first of 2025 exhibition line up - Fenella & Peters 'New Works' exhibition in February grew a fantastic crowd on opening afternoon with a hive of smiles and appreciation for Aotea Artists - some of Fenella & Peters work is available to view at the gallery.

This last month we have welcomed new artists from the northern end of island and youth members. Are warm welcome we

appreciate you coming all this way. Last month we had our first market for the year **EVERYBODY'S Market** - the rain behaved, promising positive vibes from all the stall holders and crowd. The Next **EVERYBODY'S Market** is SAT 26th April 10am - 1pm (day after ANZAC) Please book your stall at the gallery.

Our current exhibition 'Dancing around the Barrier' by Monique Endt offers the collaboration of femininity in nature, a playful painterly way to appreciate thoughts from Barrier inspiration. Now showing until 28th March.

**EXHIBITION THEME 'Collaborate'**: Hand in date between 12 -16th May.

For members & Aotea Groups\*

**Brief:** What would a group, partnership, Nana & granddaughters piece of artwork look like? Any medium, any theme (Limit to 3 pieces per collaboration)

**UPDATING BIO's & CREATIVE GROUPS ON ISLAND:** Almost every day we are getting asked about artists or WHERE are the creative groups?

Can we please have an update on times and Group names, artists info so we can SHARE. Email: [coordinator@aoteaahv.nz](mailto:coordinator@aoteaahv.nz)

**WE NEED TUTORS:** If you have a skill that you don't mind sharing to our community, we would like to hear about it. You will be paid for your time and support, and all the admin side will be sorted by the Village.

Please make all enquiries to Helen email: [coordinator@aoteaahv.nz](mailto:coordinator@aoteaahv.nz)

Kind regards, from Helen McLorinian - Aotea Arts & History Village

Helen joined Tim on Aotea FM - You can relisten to her interview on the Island stories podcast on Spotify:

[www.tinyurl.com/TimHigham](https://www.tinyurl.com/TimHigham)

## ECOLOGY FESTIVAL 2025

We have some outstanding and inspiring people from across Aotearoa presenting at this years Ecology Festival on Saturday 29 March. Join us for a day of learning and connection with:

**Fletcher Beazley**, Chair of the Ngāti Rehua Ngātiwai ki Aotea Trust and Operations Manager for DOC on Aotea. Fletcher will share a Department of Conservation and a mana whenua perspective on te taiao and conservation on and around Aotea.

**Graeme Atkins** hails from near Ruatoria in Te Tairāwhiti. He was awarded the Loder Cup in 2020 and was one of only three finalists in the 2024 Kiwibank New Zealander of the Year Awards in the Te Toa o te Tau category. Known for his specialty of working with rare and threatened plants, Graeme will share about some of his journey caring for te taiao, matauranga and his experience- especially with reintroduction of lost plants, and manawhenua led landscape scale pest management.



Photo: Graeme Atkins - [gizzylocal.com](https://gizzylocal.com)

**Richard Griffiths** works for Island Conservation from his base in Auckland, he will share his experience of island restoration, both in Aotearoa and around the world. He and his team have successfully removed invasive species from many islands across the Pacific and he will share how these efforts are contributing to the recovery of threatened species and ecosystems and improving the livelihoods of Pacific Island communities

**Opo Ngawaka** is an Island taonga residing on Mahuki in the north of Aotea. Opo will share insights into caring for te taiao, matauranga and relationship with the land, sea, and sky.

We're excited to have the incredible virtual reality experience-Kauri Pou Kaitiaki at the festival. Be immersed in a 360-degree simulated world illuminating the cultural, spiritual and ecological significance of our kauri trees and forests. Special thanks to DOC for bringing this special experience to Aotea.

**Stalls/Display stands:** There is still time to get in touch with Jo O'Reilly to book a conservation/ecology related display at the festival [ecologyvisiongbi@gmail.com](mailto:ecologyvisiongbi@gmail.com) or Ph 022 314 9346

And check [www.ecologyvision.co.nz/](https://www.ecologyvision.co.nz/) or Ecology Vision Great Barrier Island on Facebook for updates and associated events happening.

## NORTHERN RANGATAHI SECURE VOYAGE ON SPIRIT OF NZ

Four lucky northern rangatahi have been given the opportunity to attend a five day Discovery voyage on the Spirit of NZ. Tane & Tiana Troope, Rhapsody Fisher Reed & Hunter-Leigh Fisher Robinson will be departing later in the year and would like to say a HUGE thank you to Okiwi Kura, Glenfern Sanctuary, Mary Fisher, Alan Phelps, the Robertsons and the CLD project for their generous contributions towards their haerenga - they are very excited for their adventure! The four travellers will be looking for more fundraising opportunities throughout the year, if you have any mahi you need extra help with please get in touch with Casey - 021 2397 051.

Thank you again to our special community for helping us make this experience possible. Ngā mihi nui.



FOR SALE

### GREAT BARRIER ISLAND

1 ROSALIE BAY ROAD



FOR SALE  
VIEWING

Phone For Viewing Times

[barfoot.co.nz/905132](https://barfoot.co.nz/905132)

### Escape to Paradise on Great Barrier Island

Discover the ultimate coastal retreat where breathtaking views and outdoor adventures await. This unique property offers not one, but two incredible dwellings set on an expansive site with spectacular views over the bay, perfect for boating and laid-back island living.

Nadja Court  
021 777 690  
[n.court@barfoot.co.nz](mailto:n.court@barfoot.co.nz)



## GROW FOOD AOTEA & CURRACH HARVEST FESTIVAL DINNER

What a magical Late Summer Harvest Dinner on Feb 27th.

One sleepless warm night in February I was pondering how to plan a harvest meal...

Shane and Carl, the chefs at The Currach, had been up several times to our gardens, enthusiastically discussing herbs, onion varieties and tasting all the unusual things we grow... and I suddenly thought- wouldn't it be great to have them create a meal that would draw attention to vibrant flavours of homegrown produce!

Nine days later, over sixty guests gathered on a sublime late summer evening, the sun casting a golden glow over the stunning setting at The Currach. Shane and Carl put their outstanding talent to work, transforming boxes and boxes of locally grown produce, donated by many gardeners for this occasion, into an exquisite four course meal that celebrated each ingredient and had us all in raptures.



Throughout, Shane Langford serenaded us with a wonderful repertoire of songs that had one or two on their feet.

Appetiser: Okiwi Olive Oil, red pepper pesto, with garlic pizza bread straight from the pizza oven

Entrée: refreshing chilled gazpacho soup using tomatoes, peppers, red onions and cucumbers topped with finely sliced rampicante, basil chiffonade, and black fig.



Main: A choice of Gurnard in a green salsa wrapped and baked in banana leaf, or chargrilled rare steak, on a bed of roasted rosemary potatoes and red pepper sauce studded with Cape gooseberries and topped with a sprinkle of microgreens.

Many thanks to our hosts, Orla and Mark, for saying yes to this middle-of-the-night idea and very quickly making it a reality, to Carl and Shane who created all this at very short notice alongside a regular Thursday night menu, Kate Waterhouse for the Okiwi Olive Oil, Andi Ross for the Island Gin, and the various wonderful gardeners who contributed produce, eggs, and fruit. Shane Langford, thanks for the lovely songs and music.



Thank you to Feli who designed the promotional poster. Big thanks also to Jo O'Reilly who said "go for it" when I mentioned the idea!

The Currach is donating \$100 from the proceeds to each of the three island kura towards their school gardens.

Photos contributed by various guests on the evening: Sandy Lintott, Annamarie Clough, Joanne O'Reilly, very much appreciated.



Saskia Missaar and Shane Langford were the lucky recipients of the two complimentary tickets kindly donated by Ally Gibbs.

This event was a collaboration between Food Resilience Aotea (aka Grow Food Aotea) and The Currach Irish Pub

Words by Caity Endt, Food Resilience Coordinator

## LEGO CLUB LAUNCHES

Inspired from her travels around New Zealand, Nichole Lill has a lego club on the island and everyone is getting stuck in!

"It was a lot of fun, the kids fully embraced it and blew me away with their creations, imagination, and team work. Some children loved taking it upon themselves to create something new, while others formed groups to collaborate and piece together a creation, using inspiration from booklets or step by step instructions. A standout original design was by a group of three children, they each completed a section of a large ship,

and then pieced it together, the detail was amazing to see, with an engine room included! It is hard to break apart the creations or not quite complete what they started, with some ambitious lego creations. A common question asked by the kids is "When is it next on". I am hoping to include Okiwi, and get an hour glass so that the kids can see how long they have to work on their creations."

The next lego club is at Kaitoke School, 3-4pm, 2 April

And Mulberry Grove 3-4pm, 9 April.



**Building site waste?**  
We've got you.



Looking for a simple solution to sorting building waste on site?



Keep construction/demo disposal fees low by separating waste from recycling, and ensuring reusables remain uncontaminated from refuse, food waste (etc).

\$230 = 4x palletainer bin hire, including drop-off + final collection.  
- Not including disposal charge.  
+ \$172.50 for additional collection/bin swap out.  
+ Maneuverable around the site to suit building stages.

### Here to help

Get in touch for more information  
info@anamata.nz  
027 335 8943

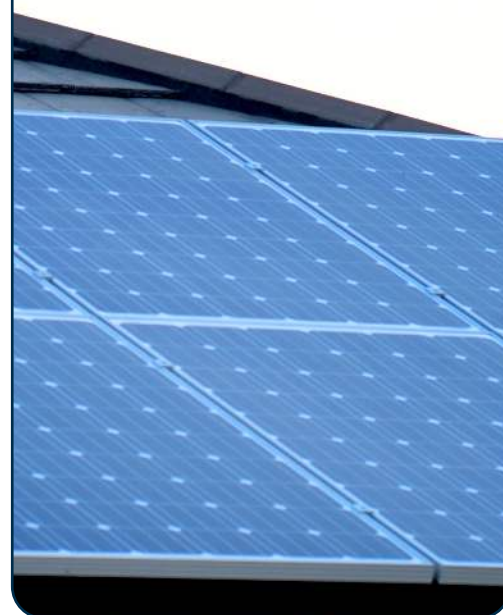
## Have the control switch at your fingertips

Enjoy the benefits of a fully off-grid solar energy system

Find out more at [greenwoodenergy.co.nz](http://greenwoodenergy.co.nz)



**Greenwood Energy**





## KĀKĀ TRAILS

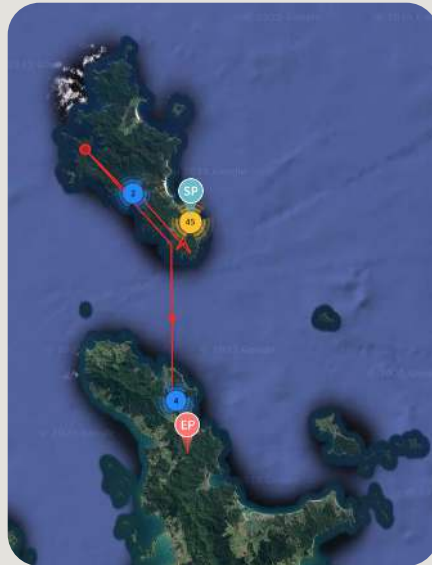
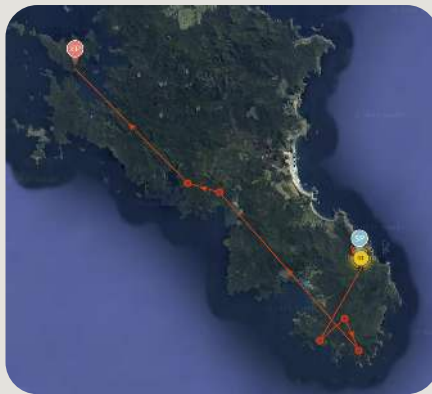
They are off!!! The first of the 9 kaka chicks banded with a transmitter from Windy Hill Sanctuary has taken flight and left the nest. Landcare Research scientist, Neil Fitzgerald, has sent through the first two maps of its Journey.

So where to from here? First stop Motu Kaikoura and then a short jump to Coromandel.

The dots on the map show where the GPS got a fix, which could be in flight, or perched in a tree. In general, the GPS only tries to get a location every 12 hrs. If the battery is well charged from lots of sunshine, it will try more often. The dots are grouped into clusters, with the number telling you how many dots are grouped together, so this gives an idea of where they are spending more time.

Thanks again to Neil Fitzgerald and Manaaki Whenua - Landcare Research for sharing this data with us.

Words by Windy Hill Sanctuary



## POSITIONS AVAILABLE AT NBRRA

The North Barrier Residents and Ratepayers Association are looking for a suitable person(s) to fill a short-term administrative role, primarily around updating constitution to coincide with new charities law changes. Message/text Josh on 0211478088 with a suitable after work time for further information.

The Association would also like to take this opportunity to thank our Local Board/Auckland Council for providing the funding to do so.

Kia ora  
NBRRA Committee

**Aotea fm**  
GREAT BARRIER ISLAND



**BROADCASTING FROM 7AM EVERYDAY**

**TUNE IN 94.6 | 104 | 107FM**

**STREAM ONLINE @ AOTEAFM.NZ**

**FIND WEEKLY SCHEDULE ONLINE**



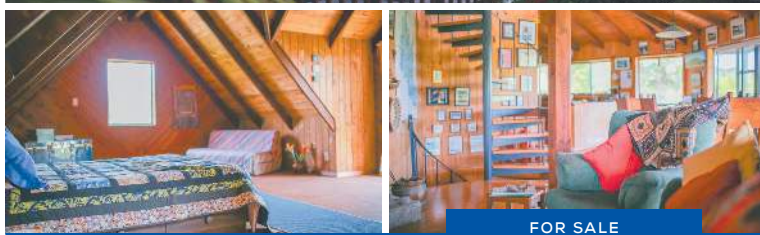
## 169 SHOAL BAY ROAD FOR SALE

3 BED, 1 BATH, NEWLY RENOVATED

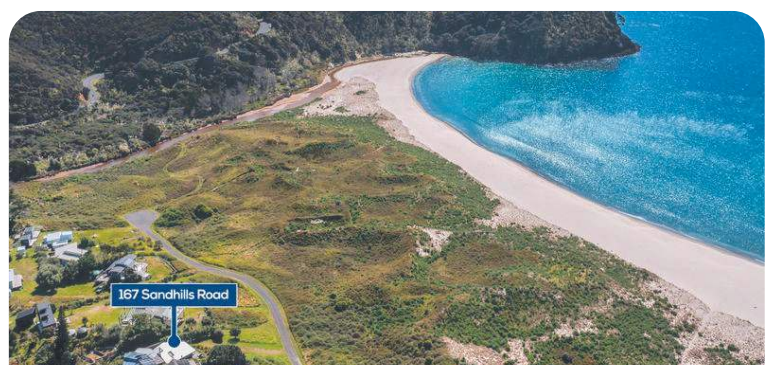


Private harbourside location with beach access  
\$1,150,000

Ph Dennis and Jan 0272063332  
<https://tinyurl.com/169ShoalBayRoad>



FOR SALE



FOR SALE

## GREAT BARRIER ISLAND

9 HARPOON HILL

2+2 2+1 2+1 1 1

**FOR SALE**

By Negotiation

**VIEWING**

Phone For Viewing Times

[barfoot.co.nz/904235](http://barfoot.co.nz/904235)

## Unique Family Home with Stunning Harbour Views

This extraordinary three-level octagonal home is nestled in a serene setting with a wrap-around deck and breathtaking views of Whangaparapara Harbour. Incl a two-story cottage on the same title.

Nadja Court  
021 777 690  
[n.court@barfoot.co.nz](mailto:n.court@barfoot.co.nz)

## GREAT BARRIER ISLAND

167 SANDHILLS ROAD

2 1 2 2 2

**FOR SALE**

By Negotiation

**VIEWING**

Phone For Viewing Times

[barfoot.co.nz/898650](http://barfoot.co.nz/898650)

## Best Beach Front!

Medlands Beach, the most coveted location on Great Barrier Island, captures the very essence of summer. With its sparkling white sand, crystal-clear waters, and a world-class surf break, this is the ultimate setting for both adventure and relaxation.

Nadja Court  
021 777 690  
[n.court@barfoot.co.nz](mailto:n.court@barfoot.co.nz)



## AOTEA'S PEST PLANT DREAM TEAMS

Big shout out to all of our Pest Plant Contractors, putting in the hard mahi to protect Aotea from High-Risk-Weeds, as well as all the Aotea residents who continue to show their support, it is much appreciated! The summer months have been swelters, but teams from Envirockiwi, Motairehe, Te Ara Kokiri and Blackdog Conservation have kept pushing through and achieved some huuuge milestones! Particularly with Kahili Ginger, which is recognized as one of the "100 of the World's Worst Invasive Alien Species". There's not many places in NZ, let alone the world, where Pest plant eradication objectives have been met or are getting close to being met. Teams on Aotea are arguably some of the most Bush Fit Contractors in the country, all you have to do is just look outside and see some of the terrain they tackle! Aotea is in good hands with the crews we have on deck and we are steering away from being part of the weediest city in the world (Which is Auckland!).

You can help the programme by logging/reporting your High Risk Weeds on inaturalist, to help hunt them down. Some of the many pest plant heroes out there putting in the mahi to keep Aotea free from pest plants are pictured below.

Words by Niklas Erikson, Senior Conservation Advisor, Auckland Council.



## THE AOTEA ADVOCATE

The Aotea Advocate is owned and put together by Bree Biederman and Lucy Dixon. It is run on community advertising and submissions.

If you have something you would like to contribute or would like to know more email us on [aoteaadvocate@gmail.com](mailto:aoteaadvocate@gmail.com)

## GET INVOLVED

Auckland Council is working towards eradicating and keeping out a number of high risk pest plant species from Aotea. We need your help to hunt these plants out.



- ✓ Visit [inaturalist.org](https://www.inaturalist.org)
- ✓ Join project 'Aotea High Risk Weeds'
- ✓ Identify and record your weedy find!



**Auckland Council**

## Raupō Taranga

Sunday Summer Series  
at Glenfern Sanctuary

with **Rodney Ngawaka**

10am-3pm

on the last Sunday of each month

Last Sessions of the Season:

**Sunday 30 March**

Come, be inspired and view the environment through the lens of local mana whenua.

Please bring a picnic, coffee and teas will be provided.



**f** Glenfern Sanctuary  
**g** [glenfern.org.nz](https://www.glenfern.org.nz)  
**e** [info@glenfern.org.nz](mailto:info@glenfern.org.nz)



## Kia ora Aotea! Let's talk about our community.

Get in touch about any local issues or if you need support. I'm here to help and would love to hear from you.

**Chlöe Swarbrick** MP for Auckland Central  
[chloe.swarbrick@parliament.govt.nz](mailto:chloe.swarbrick@parliament.govt.nz) | 09 378 4810

Funded by Parliamentary Service. Authorised by Chlöe Swarbrick, Green MP for Auckland Central, 1 Cross Street, Auckland.



**228 Shoal Bay Rd \$1,050,000**

3 bdrm private coastal retreat, 1,655m<sup>2</sup> with stunning views. [www.barfoot.co.nz/908121](https://www.barfoot.co.nz/908121)

**BARFOOT & THOMPSON**

Call Mike or Karen, 021 825 826 / 021 765 776



**Lot 2, Gray Road: By Neg**

10.9ha with direct access to Palmers Beach. Just breathtaking! [www.barfoot.co.nz/905010](https://www.barfoot.co.nz/905010)

127m of beach frontage

**BARFOOT & THOMPSON**

Call Mike or Karen, 021 825 826 / 021 765 776

**The Aotea Family Support  
Group Charitable Trust**

## Community Worker

**027-356-5567**

**community.worker@  
aoteafamilysupport.co.nz**

**10am - 4pm Mon - Thurs**

**Monday - Tryphena Office**

**Tuesday - Claris Office**

**Wednesday - Okiwi School (every 2nd week - dates on Chit Chat)**

**Thursday - Claris Office**

**Friday - Closed (urgent enquiries please contact 09-4290-465)**





# ACE CONCRETE

LAYING ALL ASPECTS OF CONCRETE

- DRIVEWAYS, SLABS, FOOTPATHS
- EXCAVATIONS & DRILLING
- RETAINING WALLS
- HOUSE FOUNDATIONS AND MORE

SHANE BOWLER | AOTEACONCRETE@GMAIL.COM | 02108269819



**Open 7 Days**

Monday - Friday

8.30am - 5pm

Saturday 9am-4pm

Sunday 9:30 am-4pm

*Extended hours in summer  
Closed Xmas & Boxing Day*

☎ 09 4290 852

✉ info@clarisstoreaotea.nz

🌐 clarisstoreaotea.nz

f Claris Store

Fresh milk, bread, fruit and vegetables. Cold beverages including beer and wine. Ice and ice cream. Locally made products. Bait, fishing gear and all other grocery and general needs



- > Painting
- > Scaffold hire
- > Residential
- > Waterblasting
- > Airless spraying
- > Commercial
- > Polyurethaning
- > Staining
- > Interior & Exterior

☎ 09 429 0509 | 📞 027 511 8269 | ✉ aoteapainting@gmail.com

## D Clough Builders Ltd

Licensed Building Practitioner

New builds | Renovations | Decks  
Scaffolding hire | Small digger work  
Driveways | Concrete pads

022 381 6652

dayneclough@me.com



NZ REGISTERED ELECTRICIAN  
DOMESTIC // COMMERCIAL // INDUSTRIAL

MATHEW O'SULLIVAN  
021437508  
MATOSULLIVAN@GMAIL.COM



**LJM**  
Plumbing & Gas

📧 LOCKY@LJMPUMBING.CO.NZ 📞 0212410808

**BARRIER'S RESIDENT SALES TEAM**

Mike Jensen 021 825 826

Karen Lombard 021 765 776

m.jensen@barfoot.co.nz

k.lombard@barfoot.co.nz

**BARFOOT & THOMPSON**



Scan for listings



**MACNAB**  
BUILDERS

Hamish | Licensed Builder



027 520 9957



macnab.building@gmail.com



## PEOPLE & POST

NORTH TO SOUTH SHUTTLE SERVICE

🚌 OPERATING MONDAY - SATURDAY

TRYPHENA - PORT FITZROY, DEPARTS - 10AM  
PORT FITZROY - TRYPHENA, DEPARTS - 11AM

From  
\$30 PP



**FREE**  
TO AOTEA CAR  
RENTAL CUSTOMERS



☎ 0800 426 832

✉ gbbuses@xtra.co.nz



**SOLARCRAFT**  
SOLAR SYSTEMS MADE SIMPLE

- Customised & expandable solutions
- In-house installation & servicing
- Residential & Commercial
- Online remote monitoring
- 25-40 year warranties



0508 CRAFTY

info@solarcraft.co.nz

solarcraft.co.nz

LOCAL REFERENCES AVAILABLE

## RG CONTRACTING LTD

Digging Barrier since 1995

**EXCAVATIONS**

**SITWORKS & FOUNDATIONS**

**RETAINING WALLS**

**DELIVERIES**  
sand  
screened soil  
metal

**POLES**  
drilling  
ramming

**DRIVEWAYS**  
concrete  
aggregate

**LANDSCAPING & DRAINAGE**

**CONTACT**

Roger 0274290876

Rory 021 1518924

rogerguthrie@xtra.co.nz