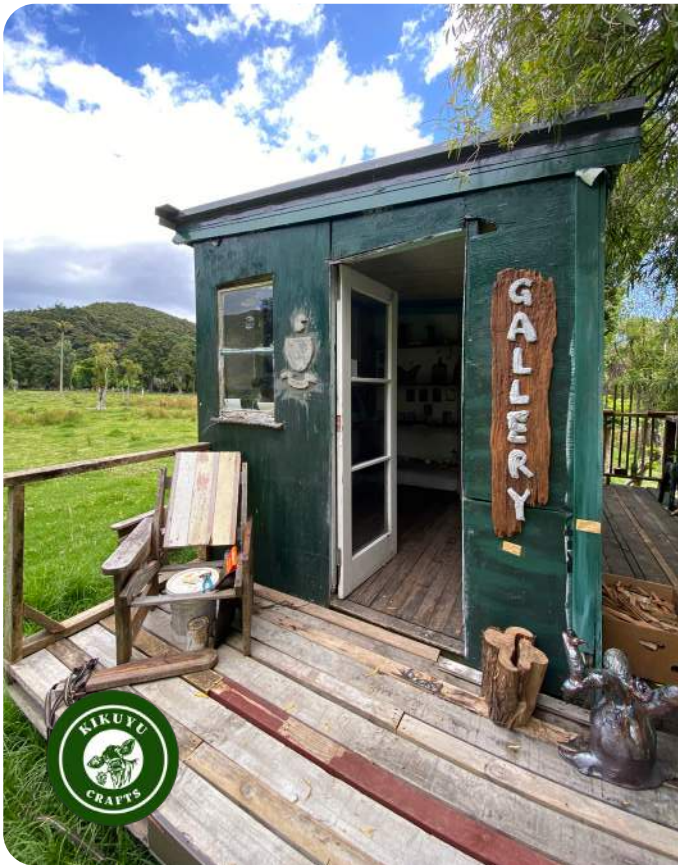


READ ONLINE AT [WWW.GREATBARRIER.CO.NZ/AOTEAADVOCATE](http://WWW.GREATBARRIER.CO.NZ/AOTEAADVOCATE)



## NEW O'SHEA ART GALLERY IN AWANA

When you head through Awana, you'll now notice a new addition on the roadside at the O'Shea's - 'Kikuyu Crafts'.

Helena O'Shea has opened a new gallery along the road side to showcase her work.

In true O'Shea style this unique little gallery is built from recycled materials and was towed into place by an Iseki Tractor.

Helena is a young mixed media artist exploring painting, clay and crafting from foraged materials, but has more recently started to explore the world of glass.

You'll find Kikuyu Crafts hidden behind the willows at 339

Aotea Road, and can drop by any time of day to see Helena's works.

This little gallery runs much like the Black Cow Gallery in Schooner bay, another hidden gem not to be missed on the Aotea Arts & Heritage Trail. You can find the Arts & Heritage Trail in the latest edition of the Visitor Guide - a free copy can be picked up from the airport visitor information desk.

Helena's sister Michaela is also hosting a felting workshop at the Aotea Arts & Heritage village on 24 January. Visit the Gallery's Facebook for more details on how to sign up.

## SUMMER PRINT SCHEDULE

Looking to make a submission or advertise? Email us on [AoteaAdvocate@gmail.com](mailto:AoteaAdvocate@gmail.com)

Next Submission Deadline: 10 February by 10am

Next Issue Available: 13 February



## GET INVOLVED

Auckland Council is working towards eradicating and keeping out a number of high risk pest plant species from Aotea. We need your help to hunt these plants out.

- ✓ Visit [inaturalist.org](http://inaturalist.org)
- ✓ Join project 'Aotea High Risk Weeds'
- ✓ Identify and record your weedy find!

✉ [pestfree@aucklandcouncil.govt.nz](mailto:pestfree@aucklandcouncil.govt.nz)





# JAN/FEB EVENT CALENDAR



SUNDAY	MONDAY	TUESDAY	WEDNESDAY	THURSDAY	FRIDAY	SATURDAY
12	13	14	15	16 Somatic Movement Jam Night at The Currach	17 Hatha Yoga   10am Glenfern Volunteer Morning   10am Community Garden Medlands Lee Fern Band at The Currach	18 Drax Project Barrier Social Club Doors 5pm   Show 8pm Tickets at GStar.co.nz Full details inside
19 Afternoon Cruise The Currach from 2pm with Shane Langford	20 Gentle Yoga 10am   Tryphena Hall	21 '60 Days of Summer' @ Art Gallery until February 6 Hatha Yoga 5:30pm at Okiwi kura	22 Toitū Aotea Community-Led Development Project New Year Kick-Off at Kawa Marae   4-6.30pm with buffet dinner to follow   RSVP to sacha@creativeplatform.net	23 Somatic Movement Jam Night at The Currach	24 Needle Felting Workshop   1-4pm at Art Gallery   Full details on cover Salmonella Dub at Claris Sports Club Tickets at GStar.co.nz	25 Yoga   9am Tryphena Hall Growers and Makers Market 9:30am CCC Queen of Waiheke Katy Sojack   The Currach
26 Rau-pō Taranga with Rodney Ngawaka at Glenfern   Details within Sunday Session at Aotea Brewing Ft. SANOI   12 - 6pm Details to the right Queen of Waiheke Katy Sojack   The Currach	27 Auckland Anniversary Public Holiday Gentle Yoga 10am   Tryphena Hall	28 Hatha Yoga 5:30pm at Okiwi kura	29	30 Somatic Movement & Mantra Meditation with Eunatē   1.30- 2.30   Tryphena Hall Jam Night at The Currach	31 Hatha Yoga   10am Glenfern Volunteer Morning   10am   Community Garden Medlands (Every Friday)	01 FEBRUARY Hollie Smith   The Currach 7pm   Full details to the right Bigbada Boom Soundsystem   Barrier Social Club   8pm- till late   \$10 entry Full details below
02	03 Gentle Yoga 10am   Tryphena Hall	04 Yoga for Presence 5:30pm   Art Gallery Hatha Yoga 5:30pm at Okiwi kura	05 '60 Days of Summer' @ Art Gallery Last Day Feb 6	06 Waitangi Day Public Holiday Somatic Movement Jam Night at The Currach	07 Hatha Yoga   10am Glenfern Volunteer Morning   10am   Community Garden Medlands (Every Friday)	08 Yoga   9am Try Hall Gareth Bruce   The Currach Singing the Blues
09 New Art Exhibition Launch Peter Edmonds & Fenella Christian "New Works" Opening 4-6pm   Claris Art Gallery   Runs till 2nd March Gareth Bruce   The Currach Singing the Blues	10 Gentle Yoga   10am Tryphena Hall Deadline for submissions for next issue of Advocate 10am	11 Yoga for Presence 5:30pm   Art Gallery Hatha Yoga 5:30pm at Okiwi kura	12 Toitū Aotea Community-Led Development Project New Year Kick-Off 4pm at Claris Conference Centre	13 Somatic Movement & Mantra Meditation with Eunatē   1.30-2.30   Tryphena Hall Issue 17 Available Jam Night at The Currach	14 John Williams Celebration of Life 5:30pm at The Currach Drinks & Nibbles to follow then it's Jam Night in memory of John!	15 Yoga   9am Try Hall

Yoga Class - details same as above or below

**WANT TO SUBMIT AN EVENT? EMAIL US AT AOTEAADVOCATE@GMAIL.COM**

FIND THE FULL EVENTS CALENDAR ONLINE AT [WWW.GREATBARRIER.CO.NZ/EVENTS](http://WWW.GREATBARRIER.CO.NZ/EVENTS)

## BIGBADA BOOM SOUND SYSTEM ARRIVES ON THE SHORES OF AOTEA IN FEBRUARY!



Barrier Social Club will host Ariki, The Bigbada Boom Sound System and an awesome line up of reggae DJs on Saturday 1st February 2025. Ariki, A.K.A Queen Big Punch is the owner and operator of Hine-Raiona Bigbada Boom Sound System. Hine-Raiona translates to Lion Maidens and is the second all-femme sound system built in Aotearoa to Ninth Wave Sound. They are currently the sole reggae sound system dedicated to supporting femme deejays/allies and artists in the reggae sound system scene Aotearoa. From Ariki: "Bigbada Boom is a combination of custom built and second hand audio gear. It is all analogue with some new gear that matches the 1970s/80s era of sound it was built for. As Maori we believe in Mauri, the life force of an object that holds the essence of all those who have interacted with it and I believe this energy imbues Bigbada, giving it its own life force which keeps growing as more people interact and add their energy to it. It is one of the few sound systems that use outdated and discontinued lines of audio equipment highly active in Aotearoa. Part of Bigbada's unique experience is to witness a vintage sound of the past in the modern era. Sound system culture is a very diverse topic but it is traced to Jamaica as early as the 1950s.

In short it was a platform that operated independently to the established status quo which was dominated by the colonial construct of the white man. It, along with pirate radio, were the beacons of broadcasting and sharing artists and music often not accepted by the mainstream (music to broaden the mind that spoke of freedom and rebellion) Music became a source of empowerment to the lower and middle class who looked for something to grasp on to, to give them hope, and up it to the man. As Jamaicans migrated to England to rebuild the nation post WW2, their music spread to the UK along with sound system culture, where it formed the underground scene of UK rave culture today. Bigbada Boom pays homage to the old school, supporting those most in need of a platform while at the same time acknowledging the whakapapa of sound system culture and its strong focus on reggae - as well as the entire spectrum that surrounds it from Ska, reggae dub, dance hall, Jungle and Dubstep." Come witness the powerful sound and uplifting vibe of the Bigbada Boom Sound System at the Barrier Social Club, Saturday 1 February 2025. Words by Eve Bellerby

G-STAR  
ENTERTAINMENT

# drax project live

SAT 18 JAN | BARRIER SOCIAL CLUB

AOTEA + AUDIO

Aotea fm

BARRIER AIR

G-STAR  
ENTERTAINMENT

# SALMONELLA DUB SOUNDSYSTEM

FEATURING WHIRIMAKO BLACK • MIGHTY  
ASTERIX • SAL DUB HORNS



Friday Jan 24 | Claris Club  
Great Barrier Island

TICKETS FROM GSTAR.CO.NZ

Aotea fm

BARRIER AIR

AOTEA + AUDIO

SEALINK

G-STAR  
ENTERTAINMENT

# SANOI

SUNDAY SESSION  
W/ HARRY CHARLES

Sunday 26th January

**AOTEA** GREAT BARRIER ISLAND  
BREWING BREWERY OPENS 12PM  
SHOW FROM 2PM

TICKETS FROM GSTAR.CO.NZ

G-STAR  
ENTERTAINMENT



GREAT  
BARRIER  
ISLAND

THE CURRACH  
FEB 1 | 7PM

TICKETS FROM GSTAR.CO.NZ

AOTEA + AUDIO

Aotea fm

BARRIER AIR



TICKETS FROM  
GSTAR.CO.NZ

## AUCKLAND ANNIVERSARY WEEKEND – 2 EPIC SHOWS!

### Salmonella Dub Sound System

Friday 24 Jan - Claris Club

Salmonella Dub Sound System featuring band originator Andrew aka DJ Rudeboy on the mix ft Mighty Asterix & Whirimako Black LIVE with the amazing Sal Dub horn section bring the bands new DOUBLE Digi album FOR ALL THINGS ALIVE in a space weaving 2 hr dancefloor journey through Salmonella Dubs basslands.

Prepare for an audio visual mashup of the bands full catalogue with new album tracks from SOUL LOVE TRIPPA – RETURN TO OUR KOWAI & FOR ALL THINGS ALIVE = remixes and versions from The Nomad, DJ Mu – Fat Freedy's Drop, Dub Fx, Dj Digital, Dreadzone, Adrian Sherwood and more.

### SANOI with Harry Charles

Sunday 26Jan – Aotea Brewing

Enjoy unmatched Island vibes, locally brewed beverages and live music from Sanoi with support from Harry Charles

Originally hailing from Berlin, Sanoi aka Jonas Fischer is a producer, DJ and a key member in the electronic / dance music scene in New Zealand. He has graced the stages of many of the country's most loved festivals & clubs where his deeply danceable DJ sets see him move seamlessly across warm, melodic, groove-driven techno and beyond.

Summer 24 alone saw him playing alongside Basement Jaxx, The Chemical Brothers, LF System, Hybrid Minds to name just a few.

### Hollie Smith

Saturday 1 Feb – The Currach Irish Pub

Hollie Smith is one of Aotearoa's most celebrated artists, renowned for her soulful voice, electrifying performances and a career spanning over two decades. From her chart topping single Bathe in The river to her critically acclaimed albums, Hollie continues to captivate audiences around the world

Don't miss out—tickets are available now at [gstar.co.nz](http://gstar.co.nz), The Rocks Bottle Shop at Claris and at each respective venue

Get your tickets today and join us for next level music on Great Barrier Island!

Visit: [www.gstar.co.nz](http://www.gstar.co.nz)



Nathan Haines at the Currach Irish Pub last weekend

## COPPER LANDLINES TO RETIRE

The copper network has served New Zealanders well for many decades but is legacy technology and close to retirement.

Chorus is planning to retire the New Zealand copper network by 2030, and a proactive retirement programme has been underway in fibre/urban areas for several years now. Many broadband and phone providers are already opting to exit older, copper voice services.

On Aotea Great Barrier where copper needs one or more radio links to provide a service, copper is being retired by the end of March 2025 as it is difficult to source spare parts to maintain these radio links.

All those using these lines have been contacted by Chorus.

If people have not heard directly from Chorus, they are not included in this initial retirement. However all copper will be retired by the end of the decade so it would pay to start thinking about an alternative technology.

More information is here: What is copper network retirement?

Visit: [www.tinyurl.com/copperretirement](http://www.tinyurl.com/copperretirement)





## BARRIERS BIGGEST DAY OUT A ROARING SUCCESS

A huge congratulations goes to event organiser Taryn Wilks, Aotea Family Support Group and all those who donated, supported and volunteered at the New Years Picnic on the 2 January at the Great Barrier Sports Club in Claris.

The event had all the usual Barrier favourites including stalls from small business owners and groups from across the island, sausage sizzle, water slide, classic car display, annual auction of gifted items plus new additions to the day including highly competitive hobby horse racing and milk chugging.

Over 1500 attended, helping to raise a huge \$13,500 for Aotea Family Support Group to support the important work they do across the island.



## Need to talk?

Free in-person, phone or online counselling sessions are available for you and your whānau.

For appointments, please contact:

**Youth & Whānau Counselling**  
Sam Grimshaw - 021 029 78608  
Margie Matthews - 021 496 620

**Adult Counselling**  
Dione Davies -  
dione@aftertherain.co.nz  
Margie Matthews - 021 496 620

If you are in crisis, call 111 or text/call 1737



## ABOVE BOARD - DECEMBER 2024

### December was the last local board business meeting for the year.

#### Here's what happened:

The board acknowledged Anamata for its impressive win in the 2024 Tamaki Makaurau waste awards; highly recommended in the community category for its single use plastic cup work.

A passport to the world - Tim Higham and Bree Biederman presented on the findings of the 2024 Small Island Big Ideas - Outside In podcast series. This epic project involved (with local board funding support) interviewing people from other small islands around the world.

Themes included slow tourism, conservation-led economies, collectivism, indigenous leadership, self-determination and matriarchal societies. As Tim says: "what a treat it was to have a passport to 10 islands around the world". The series has already sparked conversations and ideas on Aotea. You can check it out at [smallislandbigideas.co.nz](http://smallislandbigideas.co.nz).

**Board priorities for the year** - The board will come to you for feedback on its annual budget at the end of February. The budget sets out priorities and activities for the year ahead. These are:

- > all current projects and programmes including community grants (to groups like AFSG, the education trust etc), environmental work, and parks upgrades
- > set up of a new community-run local fish supply (more on this in the new year, but a very exciting project to acquire some community quota and finally be able to catch, process and sell locally caught fish on the island).
- > community marine education and marine biosecurity work Keep an eye out for the chance to have your say, including at a March 1 drop in session in Claris.

**I Shih Tzu not!** - An assessment of current dog policies across Auckland has found "structural problems with the current rules". Dog control is always a sensitive topic on the island, with so many local mutt devotees, so let's work delicately through the proposed changes. Note they are only proposed at this stage; you will be able to have your say on them shortly.

#### Here is what is on the table:

1. Dogs to be PROHIBITED on the northern end of Pah Beach (north of Blackwell Drive) to better protect vulnerable nesting shorebirds on that part of the beach (these include banded rail, pāteke, NZ Dotterel, little blue penguin).
2. But a slight extension in where dogs are allowed off leash at the north end of Gooseberry Flat, as the current off-leash zone on Gooseberry Flat "is not intuitive and difficult to follow and enforce". Probably best demonstrated by these maps:

Map of current rules in the Policy:



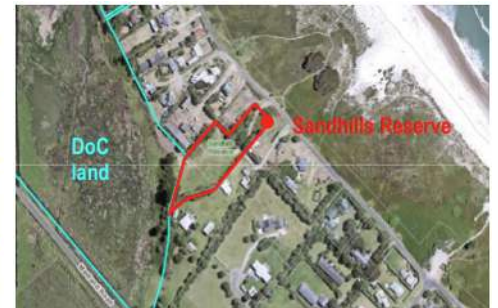
Map of change request:



3. There's a cool new proposed canine zone though, at the Sandhill Reserve in Medlands, a most under-utilised and picturesque destination for both man and best friends.

It is proposed that dogs be allowed to run free at the reserve, in order to provide "a new off-leash area on the island without significant risk to protected wildlife, flora, private property or dog owners".

Probably you've never even heard of the reserve? Understandable. It's tucked away across the road from the two big pohutukawa heading south along Sandhills.



Perhaps we could run a competition for the park's name...The Bark Side?

The Barking Lot?

Paws for Thought Park?

Central Bark?

Okay, I'll stop now.

*Above Board is written by Kathy Cumming. Kathy is Auckland Council's Community Broker, but she covers these meetings as an independent journalist (so she can use more fruity language).*



## BRINGING BUSTER & RIPEKA HOME

Gloria Park joined Tim Higham on his Monday morning show on Aotea FM and chatted about how the family uplifted Buster and Ripeka from the dementia ward and brought them back for their last days.

Gloria shares stories of her life growing up on Aotea, fond memories of her parents and a beautiful recording of Ripeka singing.

Buster passed away before Christmas on 21st December - our heart felt condolences go out to the Park whanau for their loss.

**You can listen back to Gloria's interview on the Island Stories Podcast on Spotify here:**

[www.tinyurl.com/island-stories](http://www.tinyurl.com/island-stories)

**or directly on the Aotea FM website here:**

[www.aoteafm.nz/island-stories-tim-higham/](http://www.aoteafm.nz/island-stories-tim-higham/)



## NEWS FROM ANAMATA

*tiny & fabulous!* **ANAMATA IS OPEN** *Come say hi!*

We've gone boutique! With our shop size reduced + no storage, due to the recent fire, we have made the tough decision to change our drop-off system for items normally accepted for free. Previously, we've accepted most drop-offs, unfortunately discarding around 90%, at time of sorting or after being in the shop for up to two years. While we endeavour to find alternative solutions on and off island, these items go to landfill at a cost we can no longer cover.

**Drop-offs will now be sorted as they come in /with customer still there. Please ensure:**

- 1. Items are clean, saleable, in great condition. If items do not meet this criteria, we are unable to accept them. These must be taken back, or we can drop to transfer station for a fee.**
- 2. No furniture drop-offs, due to no storage.**

Similar consideration needs to be made for St Johns Opp shop so they're not burdened with landfill fees and can continue to distribute funds earned to the community.

**We appreciate your understanding as we make these necessary changes to align with capacity and environmental goals.**

**THANK YOU!**

**Anamata RESOURCE RECOVERY COMMUNITY ENTERPRISE**

**OUR 2024 IN NUMBERS**

*We diverted 30.43 tonnes of goods from landfill directly to customers - keeping items in circulation*

*Through Anamata we've recycled 612.96 tonnes of materials, backloaded by local businesses to recycling facilities in Tāmaki Makaurau*

*By supporting local business, Anamata contributed \$971,236 back into the Aotea community*

*Our crew donated over 200 hours to various local projects*

**KĀ PAI, AOTEA WE DID THIS TOGETHER!**

### THANK YOU

We would like to thank and acknowledge the community who have supported us over the past year moving beyond waste on Aotea and creating a local, circular economy. We'd especially like to thank those who helped after the recent fire; we were awed and buoyed by the moral and practical support, it was very appreciated and made a huge difference to how we were able to cope with the situation. Thank you to Lewis for smelling smoke and calling it in and our volunteer fire brigade who responded so quickly and ably. Those who at such a busy time of year gave their time to help us clean up and clean out, and those who did washing at home, we couldn't have done it without you. Also our tradies, especially Logan Golaboski who went above and beyond to ensure the quick installation of a temporary power system so we could open up again so quickly. Thank you all, you are an inspiration.

## JANUARY IN THE GARDEN WITH CAITY ENDT

### In the Vege Garden

Water deeply at least 2-3 times a week, preferably in the evening so plants and soil have a chance to soak it up over the cool night. Lettuces appreciate daily watering.

**Seed saving season** is upon us! Take a look around your garden, and notice any plants that are going to seed (or that you would like to collect seeds from!).

**Check out the full article on our website:**

[www.foodresilienceaotea.nz/garden-notes/seed-saving](http://www.foodresilienceaotea.nz/garden-notes/seed-saving)

### Harvesting Tips

**Capsicums/sweet peppers** may still be green-harvest one or two if you can't resist, they usually color up by the end of January and become much sweeter

**Harvest rockmelons** when the skin develops an orange flush and the characteristic aroma develops. Be careful - rats know when melons are ripe from the scent too, so have your eyes peeled and your nose tuned in! Check them before nightfall.

**Watermelons** are ripe when the spot where they lie on the soil turns deep yellow, and the tendril closest to the fruit withers and dies.

**Onions** will be lodging now - ie flopping over, and the first wrappers will be turning papery. Bring them in to dry, before any rain. Longkeepers need to stay dry from the point of lodging.



**If birds are getting to your ripe tomatoes**, pick them as soon as they show colour- they will continue to ripen beautifully indoors in a warm spot

**Watch out for:**

**Caterpillars** (use nets or Bt), Aphids (plant alyssum, let your coriander flower!), Birds after your seedlings (use nets)

**Green Veg Bugs** on beans, tomatoes and peppers: add some neem granules to holes around the plants and squish when you find them

**Tomato fruit worm- a caterpillar** that eats its way and out of tomatoes, even unripe green ones.

**Monitor for rats** in the kumara patch and around capsicums and melons.

**Powdery mildew** on zucchini and pumpkin plants- this usually comes after dewy cold

nights. Remove affected leaves, spray plants thoroughly with a 20% milk solution.

### In the Orchard

Harvest time! Plums and peaches are ripening now. Consider building a solar drier. Read our how to guide here: [www.foodresilienceaotea.nz/garden-notes/building-a-solar-drier](http://www.foodresilienceaotea.nz/garden-notes/building-a-solar-drier)

Thin overcrowded fruit on pears and apples; it seems to have been a great season for fruit set on pip fruit!

Protect developing fruit against birds.

Feed citrus with sheep pellets or chook manure before the next rain (3x per year but not in winter) too late to prune as borer beetle out and about.

Mulch fruit trees after rain to lock in the moisture

### Feeding the garden

Liquid feed heavy producers such as egg plants, cucumbers and tomatoes weekly with either purchased or home made liquid fert if your soil is not very fertile. Fish and seaweed mixes are great. Apply liquid fert to damp soil, not dry, preferably in the evening.

*Words by Caity Endt, Food Resilience Coordinator*





**AUCTION THIS WEEK**

## GREAT BARRIER ISLAND

167 SANDHILLS ROAD

## Simply Unbeatable Holiday Destination

Medlands Beach, the most coveted location on Great Barrier Island, captures the very essence of summer. With its sparkling white sand, crystal-clear waters, & a world-class surf break, this is the ultimate setting for both adventure & relaxation. First time on the market, don't miss the chance to secure this dream holiday home or full-time residence where endless summers & a vibrant community await.

### FOR SALE

10:00am 28 Nov 2024 at 8-12 The Promenade, Takapuna (unless sold)

[barfoot.co.nz/898650](http://barfoot.co.nz/898650)

### VIEWING

Phone for Viewing Times



Nadja Court

021 777 690

[n.court@barfoot.co.nz](mailto:n.court@barfoot.co.nz)



**TENDER**

## GREAT BARRIER ISLAND

9 HARPOON HILL

## Immerse Yourself in Nature

This extraordinary three-level octagonal home is nestled in a serene setting with breathtaking views of Whangaparapara Harbour. Surrounded by lush bushland and mountains, the property features floor-to-ceiling windows and a wrap-around covered deck that immerse you in nature from almost every room. On the same title, this charming two-story cottage is perfect for guests, extended family, or potential rental income.

2+2 2+1 2+1 1 1 2

### TENDER

4:00pm 30 Jan 2025 at 386 Beach Road, Mairangi Bay (Branch Office)

[barfoot.co.nz/904235](http://barfoot.co.nz/904235)

### VIEWING

Phone For Viewing Times



Nadja Court

021 777 690

[n.court@barfoot.co.nz](mailto:n.court@barfoot.co.nz)



## ORUAWHARO MEDLANDS ECOVISION FAMILY FUN DAY

The OME Family Friendly and Fun afternoon was a conservation themed event with games, quizzes, and information booths tailored mainly to kids but also plenty of fun and info for adults.

OME had several of our own booths and the OME team all worked hard to come up with interesting material to engage the local community and visitors alike.

Stalls included a wetland and grow tunnel booth with plants, a wetland filter model and lots of info about our restoration project, a birds of Oruawhoro booth, hosted by John Ogden, the local bird guru. A biodiversity booth, encouraging people to use the Aotearoa Species Classifier app, learning how to identify all sorts from plants and trees to lizards, birds, shells, and much more. A pestcontrol booth, mainly for locals who would like to sign up to be included in the OME pest control expansion. And the busiest wee booth, the bake sale! The OME team brought along some mouthwateringly delicious baking to help pay for potting mix and other random expenses.

A trail camera video clip from the black petrel burrows was playing inside the OME Eco-Hub, showing clacking petrels, abundant rats, and other visitors around the burrows.

We had one main quiz for kids (and some adults) and all the answers could be found at the various booths on the day.

DOC had their own kauri dieback quiz too and Auckland Council had crosswords and other games to complete. There were prizes for those who got it right and we did see some enthusiastic families walking away with their arms full of prizes.

There was a 'knock the rat down' game, featuring a pile of trap boxes and some rubber rats. Extra interest could be added with a kokako toy! Obviously trying not to knock down the kokako.

We added in a cornhole game to practice throwing the sandbags at the rat pile.

We had a flax weaving tent, making putiputi, fish and stars. An option to take part in some colouring in and making facemasks and paper birds.

**The OME team were also joined by other groups:**

- **Motu Community Nursery** with a beautiful selection of their own plants, testing people's knowledge of native plants. Harder than you might think!
- **Glenfern Sanctuary** with info about their sanctuary including cool seabird stuff. Christine used a burrow scope to show people how we look for petrels in known burrows.
- **Aotea Great Barrier Environmental Trust** selling soft toys and posters
- **Manta Watch** promoting their new app where people can record Manta sightings
- **The Department Of Conservation** with a kauri dieback booth
- **Auckland Council**, promoting their pest plant iNaturalist project

Words by Lotte McIntyre, OME Coordinator



**PROPERTY FOR PRIVATE SALE**  
160 SHOAL BAY ROAD, AOTEA  
75% PRIVATE FINANCE AVAILABLE

This two level 3 bedroom, 164m<sup>2</sup> dwelling is situated on a large 2,580m<sup>2</sup> bush clad section. Conveniently located walking distance to the Tryphena Ferry wharf and Mulberry Grove school, shops and beach

CONTACT GEOFF ISAACS  
WHATSAPP 027-7331 4411 OR FROM  
OVERSEAS +64 27-7331-4411  
OR EMAIL: PURIRIPLACEGEOFF@GMAIL.COM  
HTTPS://LISTED.CO.NZ/PROPERTY/3564

## FREE Microchipping & Desexing of Aotea Cats

**Be a responsible cat owner  
Keep your cat and wildlife safe**

Aotea is home to rare and endangered species facing a threat from feral cats. There is feral cat trapping underway - let's keep your pet cat safe.

- Microchip your cat
- Desex your cat
- Register your cat in the Aotea Cat-alogue
- Put a collar on your cat for easy ID
- Keep your cat on your property

**For FREE desexing and microchipping contact local GBI Vet Anne Kernohan on 09 4290 463 or text 021 797 538**

Register your pet cat in the Cat-alogue, email: [annamarie.clough@aucklandcouncil.govt.nz](mailto:annamarie.clough@aucklandcouncil.govt.nz)



## Raupō Taranga

Sunday Summer Series  
at Glenfern Sanctuary

with Rodney  
Ngawaka

10am-3pm

on the last Sunday of each month

Next Sessions: Sun 26 Jan

Sun 23 Feb | Sun 30 Mar

Come, be inspired and view the environment through the lens of local mana whenua.

Please bring a picnic, coffee and teas will be provided.

 Glenfern Sanctuary

 [glenfern.org.nz](http://glenfern.org.nz)

 [info@glenfern.org.nz](mailto:info@glenfern.org.nz)



## YOUNG ENVIRONMENTALIST SHARES HOW AOTEA HAS SHAPED HIS CONSERVATION CAREER

Young environmentalist Charlie Thomas joined Tim on Aotea FM last week. He reflected on the impact his childhood summer holidays spent on Gooseberry Flat on Aotea have had on shaping his career in conservation with Forest and Bird, mimicked a few bird calls and chatted about his work teaching people around Aotearoa to recognise birds.

**Listen back to Charlie's interview here:**

[www.tinyurl.com/island-stories](http://www.tinyurl.com/island-stories)

**or directly on the Aotea FM website here:**

[www.aoteafm.nz/island-stories-tim-higham/](http://www.aoteafm.nz/island-stories-tim-higham/)



**Aotea fm**  
GREAT BARRIER ISLAND



**BROADCASTING FROM 7AM EVERYDAY**

**TUNE IN 94.6 | 104 | 107FM**

**STREAM ONLINE @ AOTEAFM.NZ**

**FIND WEEKLY SCHEDULE ONLINE**







# Kia ora Aotea!

## Let's talk about our community.

Get in touch about any local issues or if you need support. I'm here to help and would love to hear from you.

**Chlöe Swarbrick** MP for Auckland Central  
 chloe.swarbrick@parliament.govt.nz | 09 378 4810

Funded by Parliamentary Service. Authorised by Chlöe Swarbrick, Green MP for Auckland Central. 1 Cross Street, Auckland.



### D Clough Builders Ltd

Licensed Building Practitioner

New builds | Renovations | Decks  
 Scaffolding hire | Small digger work  
 Driveways | Concrete pads

**022 381 6652**  
 dayneclough@me.com

### Open 7 Days

**Monday - Friday**  
 8.30am - 5pm

**Saturday** 9am-4pm  
**Sunday** 9:30 am-4pm

Extended hours in summer  
 Closed Xmas & Boxing Day

☎ 09 4290 852  
 ✉ info@clarisstoreaotea.nz  
 🌐 clarisstoreaotea.nz

**Claris Store**  
 Fresh milk, bread, fruit and vegetables. Cold beverages including beer and wine. Ice and ice cream. Locally made products. Bait, fishing gear and all other grocery and general needs

PAINTING, WATER BLASTING, SCAFFOLDING.

**CALL US FOR A FREE QUOTE**

- Painting
- Waterblasting
- Polyurethaning
- Scaffold hire
- Airless spraying
- Staining
- Residential
- Commercial
- Interior & Exterior

☎ 09 429 0509 | 📠 027 511 8269 | ✉ aoteapainting@gmail.com

**NZ REGISTERED ELECTRICIAN**  
 DOMESTIC // COMMERCIAL // INDUSTRIAL

**MATHEW O'SULLIVAN**  
 021437508  
 MATOSULLIVAN@GMAIL.COM

### Port Fitzroy Store

LPG ~Fruit & Veg ~ Dairy products  
 Bread ~ Meat ~ Ice cream ~ Snacks  
 Bottle Store ~ Other groceries  
 Craft and Sundry Items

Monday – Saturday: 9am-5pm  
 Now closed on Sundays

09 429 0056 | fisher.3@xtra.co.nz

## SOLARCRAFT

SOLAR SYSTEMS MADE SIMPLE

- Customised & expandable solutions
- In-house installation & servicing
- Residential & Commercial
- Online remote monitoring
- 25-40 year warranties

**0508 CRAFTY**  
 info@solarcraft.co.nz  
 solarcraft.co.nz

LOCAL REFERENCES AVAILABLE

**LJM Plumbing & Gas**

📧 LOCKY@LJMPLUMBING.CO.NZ 📞 0212410808

### BARRIER'S RESIDENT SALES TEAM

**Mike Jensen** 021 825 826  
**Karen Lombard** 021 765 776

m.jensen@barfoot.co.nz  
 k.lombard@barfoot.co.nz

**BARFOOT & THOMPSON**

Scan for listings

**MACNAB BUILDERS**

Hamish | Licensed Builder

☎ 027 520 9957  
 ✉ macnab.building@gmail.com

## PEOPLE & POST

NORTH TO SOUTH SHUTTLE SERVICE

🚐 OPERATING MONDAY - SATURDAY

TRYPHENA - PORT FITZROY, DEPARTS - 10AM  
 PORT FITZROY - TRYPHENA, DEPARTS - 11AM

From **\$30 PP**

**FREE TO AOTEA CAR RENTAL CUSTOMERS**

**AOTEA CAR RENTALS**

☎ 0800 426 832  
 ✉ gbbuses@xtra.co.nz

**GREAT BARRIER TRAVEL**

## RG CONTRACTING LTD

Digging Barrier since 1995

<b>EXCAVATIONS</b>	<b>SITWORKS &amp; FOUNDATIONS</b>
<b>RETAINING WALLS</b>	<b>DELIVERIES</b> sand screened soil metal
<b>POLES</b> drilling ramming	<b>DRIVEWAYS</b> concrete aggregate
<b>LANDSCAPING &amp; DRAINAGE</b>	<b>CONTACT</b> Roger 0274290876 Rory 021 1518924

rogerguthrie@xtra.co.nz